

AttackPRO

DECISION MAKING TIC FOR FIREFIGHTING.
DURABLE, HIGH-RESOLUTION
THERMAL IMAGING CAMERA.

KEY CAMERA SPECS

- 320 x 240 Thermal Sensor
- 57° Horiz Field of View
- 20C (-4F) to 550C (1022F) Temp Detection
- IP67 Ingress Protection
- High Impact and Heat Resistant
- 300 Lumen LED Flashlight

Seek
thermal

thermal.com



AttackPRO Kit: FQ-PAEX
5yr Enhanced Warranty: WA-5USATTACKPRO

Designed with firefighters for firefighters, the AttackPRO™ thermal imaging camera offers an unmatched combination of image quality, durability, and price.

With its high resolution and wide field of view, AttackPRO is the new decision-making weapon of choice for captains and commanding officers. Mixed-gain pixel technology eliminates the visual confusion and delay of switching between high-gain and low-gain modes. AttackPRO lets you clearly see the fire and the crew, all in one detailed image.

The kit includes the AttackPRO camera, 2 batteries, and a charging dock.



Designed and Manufactured in the USA with Global Components. Thermal sensor designed and manufactured by Seek in Santa Barbara, CA USA



KEY FEATURES

320 x 240 High-Resolution Thermal Sensor
76,800 temperature pixels for maximum image clarity and sensitivity

Waterproof Design
Durable and reliable design built with IP67 rating

Wide, 57-Degree Field of View
Easily scan a large area to identify hazards or victims in seconds

Long-Lasting Rechargeable Battery
Greater than 6 hours of continuous thermal imaging

Simple Operation. Purpose-Built for the Fire Ground
One button thermal operation, no confusing menus or settings. Get the job done efficiently and consistently

BENEFITS

Decision Making on Command
Direct firefighters, water, and resources with expedited tactical precision

Robust Personal TIC
Equip the entire department with the first affordable decision making TIC

See Through Smoke. Flashlight Optional.
300 lumen LED flashlight available at the touch of a button

Search and Rescue
Find victims and self-rescue faster with a reliable personal TIC

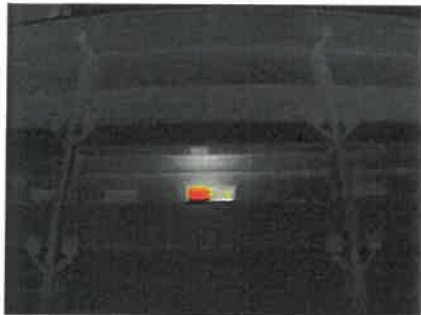
Execute 360 Size-ups & Overhaul Faster
When seconds count, a Seek decision-making TIC saves time and lives

TECHNICAL SUMMARY

SPECIFICATIONS	DESCRIPTION
Thermal Sensor	320 x 240 (76,800 pixels)
Detection Distance	12 inches to 1,000 feet
Field of View	57° HFOV, 42° VFOV
Temperature Range	-4 to 1,022°F (-20 to 550°C)
Operating Temp	-4 to 131°F (-20 to 55°C) - no time limit up to 302°F (150°C) - max 15 min up to 500°F (260°C) - max 5 min
Frame Rate	> 25 Hz Fast Frame
IP Rating	IP67 Waterproof
Flashlight	300 Lumen LED
Display	3.5" Color with Corning® Gorilla® Glass
Thermal Sensitivity	< 70 mK
User Interface	On device 2 tactile button operation
Temp. Display Scale	Fahrenheit or Celsius
Image modes	2 Options (TIBASIC-default, and TIBASIC+)
Storage Media	NA
Battery	>6 Hours Thermal Imaging (w/o flashlight); >3hrs (with thermal AND flashlight)

For support and user guides visit thermal.com

THERMAL APPLICATIONS



360 SIZE UP



FIRE ATTACK



OVERHAUL

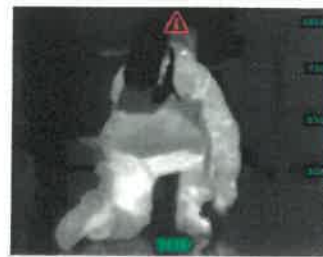


300 LUMEN LED LIGHT



Seek AttackPRO combines powerful thermal insight and a bright LED flashlight in an intuitive two button interface.

USER INTERFACE



TI BASIC

Maintain your situational awareness with a simple and decluttered display showing greyscale and colorized regions



TI BASIC+

Enhance your tactics with a spot temp readout while still maintaining greyscale and colorized regions

Seek more at thermal.com

6300 Hollister Ave, Santa Barbara, CA 93117

Seek Thermal engineers, designs and manufactures high quality thermal imaging products and core platforms for consumer, commercial, and heat sensing IoT data applications. With headquarters in Santa Barbara, California, the global hub of thermal imaging innovation, the company has developed breakthrough thermal imaging camera cores that will enable a range of affordable products for use at home, work and play. For more information visit thermal.com and follow #seekthermal on Instagram and @seekthermal on Twitter.



FD-PAA

The AttackPRO Truck Charger lets you securely mount and charge the camera and an additional battery inside the apparatus. Mount the truck charger vertically or horizontally to any suitable and stable surface to keep your AttackPRO charged and ready. Camera and batteries not included.

What's included in the box:

- Truck Charger unit
- Power supply (for AC power)
- AC plugs for US, EU, and UK (for power supply)
- Accessory Kit: Fuse holder/fuse, self-tapping mounting fastener (3x), 12/24VDC terminal connector, feet for desktop/table use (4x)
- Quick Start Guide

Equipment ratings

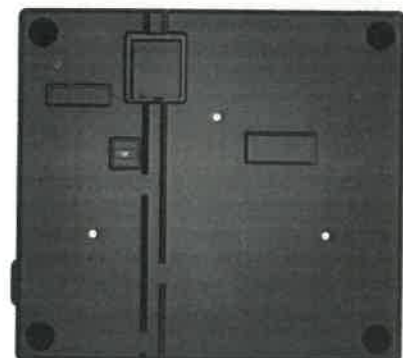
SPECIFICATIONS

Supply Voltage	12VDC
Power Rating	24W
Environmental	0°C to 40°C operating, 10% - 90% RH
Dimensions	10 x 91 x 5 inches
Weight	~ 2lbs (0.9kg)
Charge Time (battery)	< 6 hours
Charge Time (camera)	< 6 hours

Recommended fuse and cable for hardwire install

SPECIFICATIONS

Cable	16AWG Stranded SAE J1128
Fuse	Auto 3A 32VDC Blade mini
Environmental	Intended for indoor use only



Seek more at thermal.com

6300 Hollister Ave, Santa Barbara, CA 93117

Seek Thermal engineers designs and manufactures high quality thermal imaging products and core platforms for consumer, commercial, and heat sensing IoT data applications. With headquarters in Santa Barbara, California, the global hub of thermal imaging innovation, the company has developed breakthrough thermal imaging camera cores that will enable a range of affordable products for use at home, work and play. For more information visit thermal.com and follow #seekthermal on Instagram and @seekthermal on Twitter